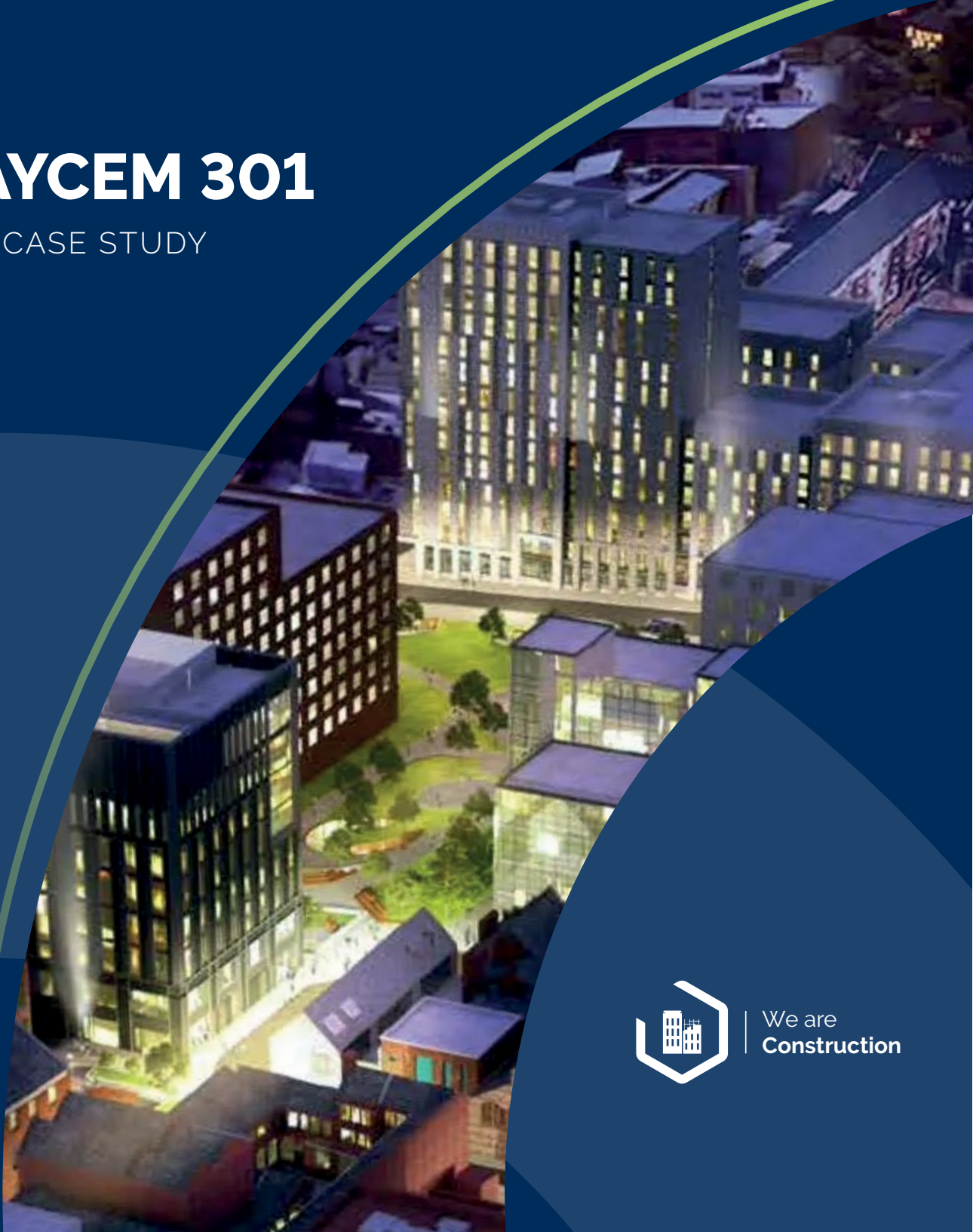




SPRAYCEM 301

PROJECT CASE STUDY

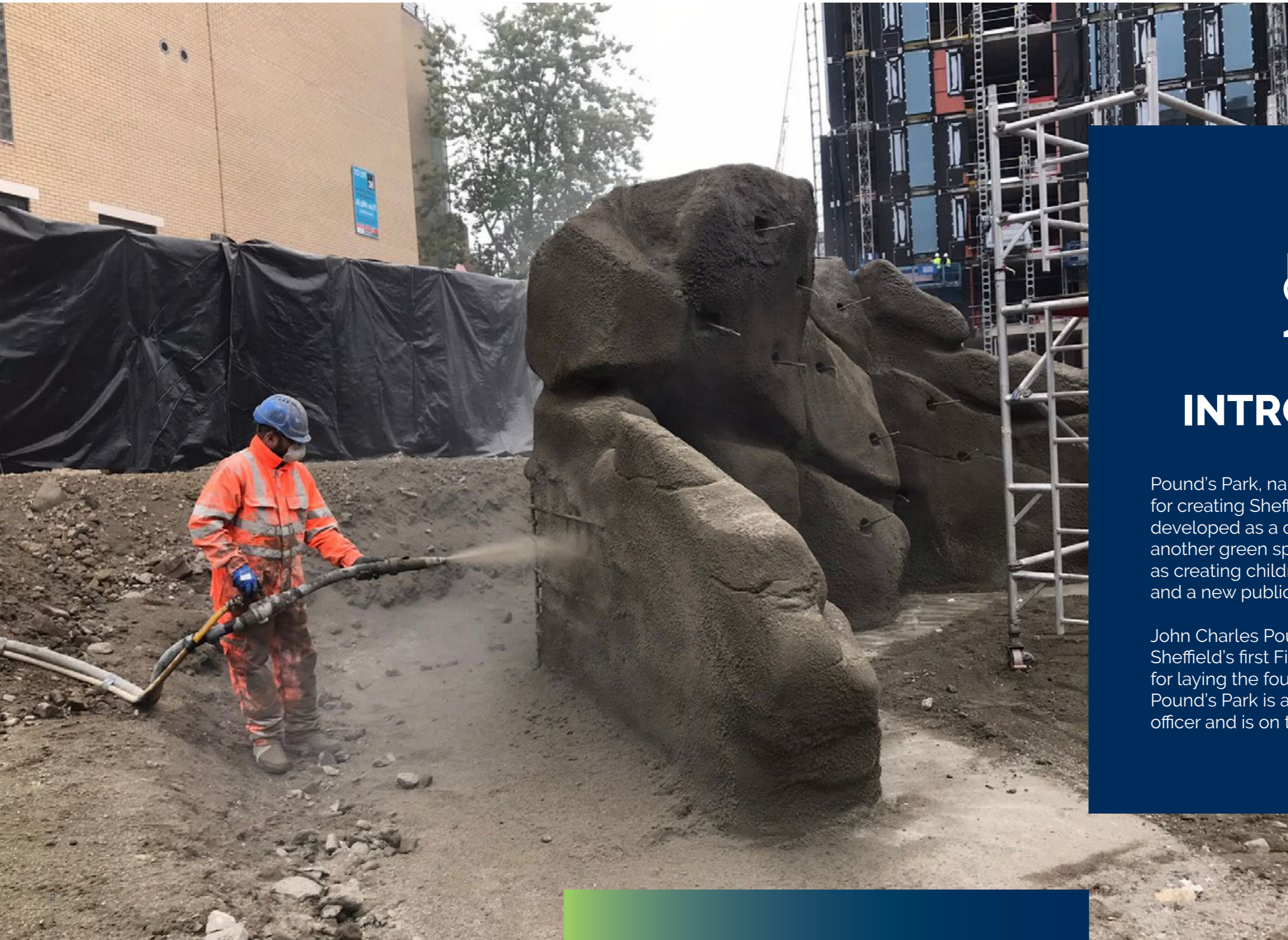


We are
Construction



PROTECT
PRESERVE
ENHANCE

NUFINS SUPPLIES SPRAYCEM 301 CONCRETE FOR POUNDS PARK, SHEFFIELD



INTRODUCTION

Pound's Park, named after the man responsible for creating Sheffield's first fire brigade, is being developed as a cultural centre. It will create another green space in the city centre, as well as creating children's play areas, water features and a new public transport interchange.

John Charles Pound (1834 - 1918) was Sheffield's first Fire Superintendent, responsible for laying the foundations of today's fire service. Pound's Park is a tribute to Sheffield's first fire officer and is on the site of a former fire station.

PROJECT DETAILS

Nufins were proudly chosen to supply 18 tonnes of Spraycem 301 to Pounds Park, Sheffield, in assistance of the "Heart of the City" programme.

The area was originally commercial business units, but as part of the "Heart of the City" programme, it has been designated as a multi-sensory and recreational area for the public and students.

The task was to produce a large rock formation made from steel framing and polystyrene, sprayed with concrete with a dye added for features and then shaped for formation integrity and authenticity.

Specialist Spray Contractor GSSL (Gunitite & Shotcrete Services Ltd) carried out the spraying on behalf of Henry Boot. Materials were procured directly from ourselves following the new product development.



SYSTEM BENEFITS:



Rapid strength development without the use of accelerators



Excellent adhesion to correctly prepared substrates



Excellent high build characteristics



Controlled low water/cement ratio



Excellent durability & resistance to water, frost & salt attack



Only requires addition of clean water



Low rebound



Formulated using non-reactive aggregates, with reference to alkali-silica reaction

Spraycem 301 is a pre-packed single component polymer modified spray applied mortar. It has been designed for machine applications using the dry-spray process and is particularly suitable on large volume repairs to reinforced concrete structures which have been damaged due to reinforcement corrosion or frost attack. May be utilised for hand-applied patching, using formwork if necessary. Spraycem 301 has been specially formulated to achieve and surpass performance requirements of EN 1504 Part 3 Class R3. Applications include bridges, retaining walls, tunnels, reservoirs, building facades and coastal structures.

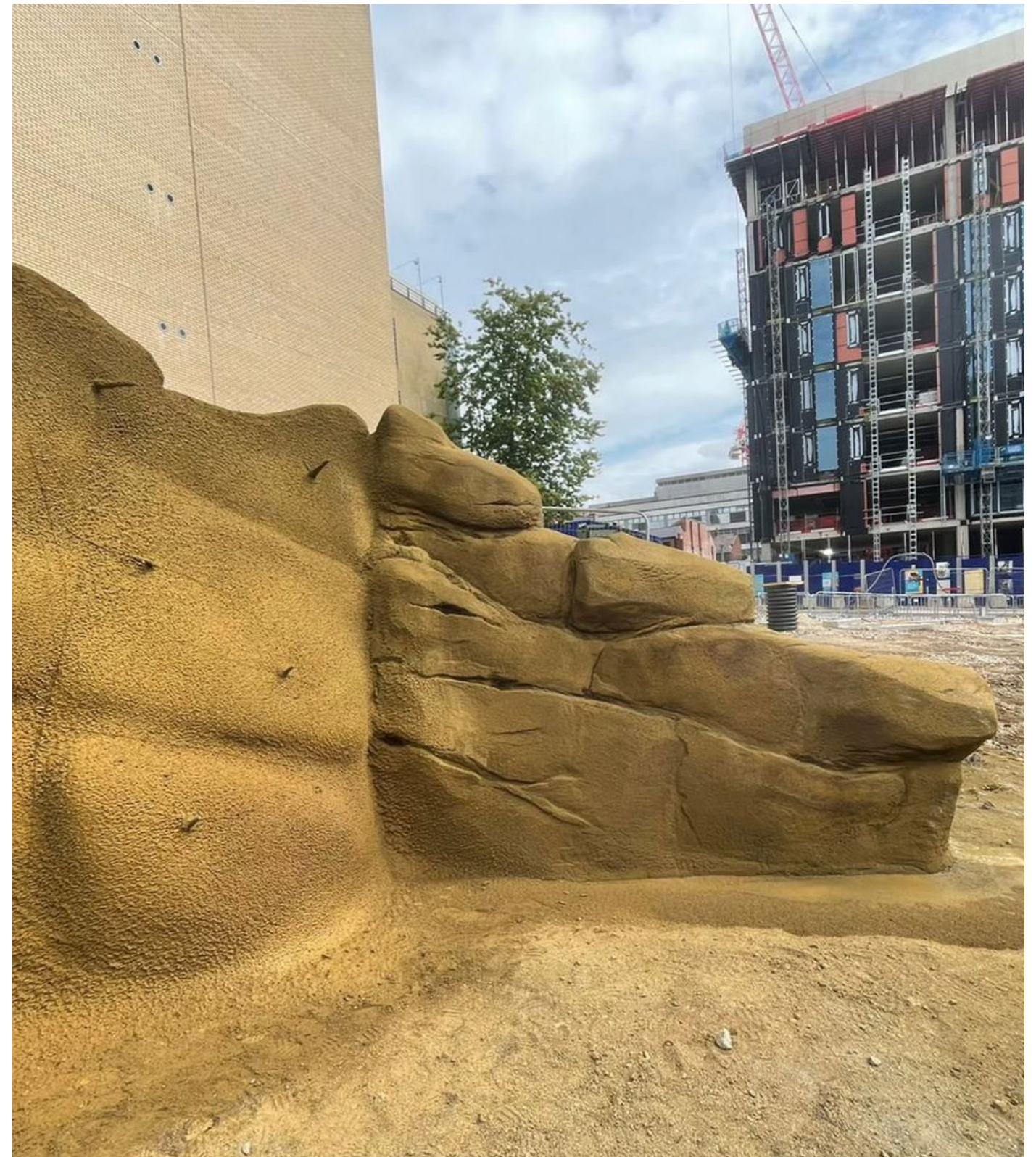
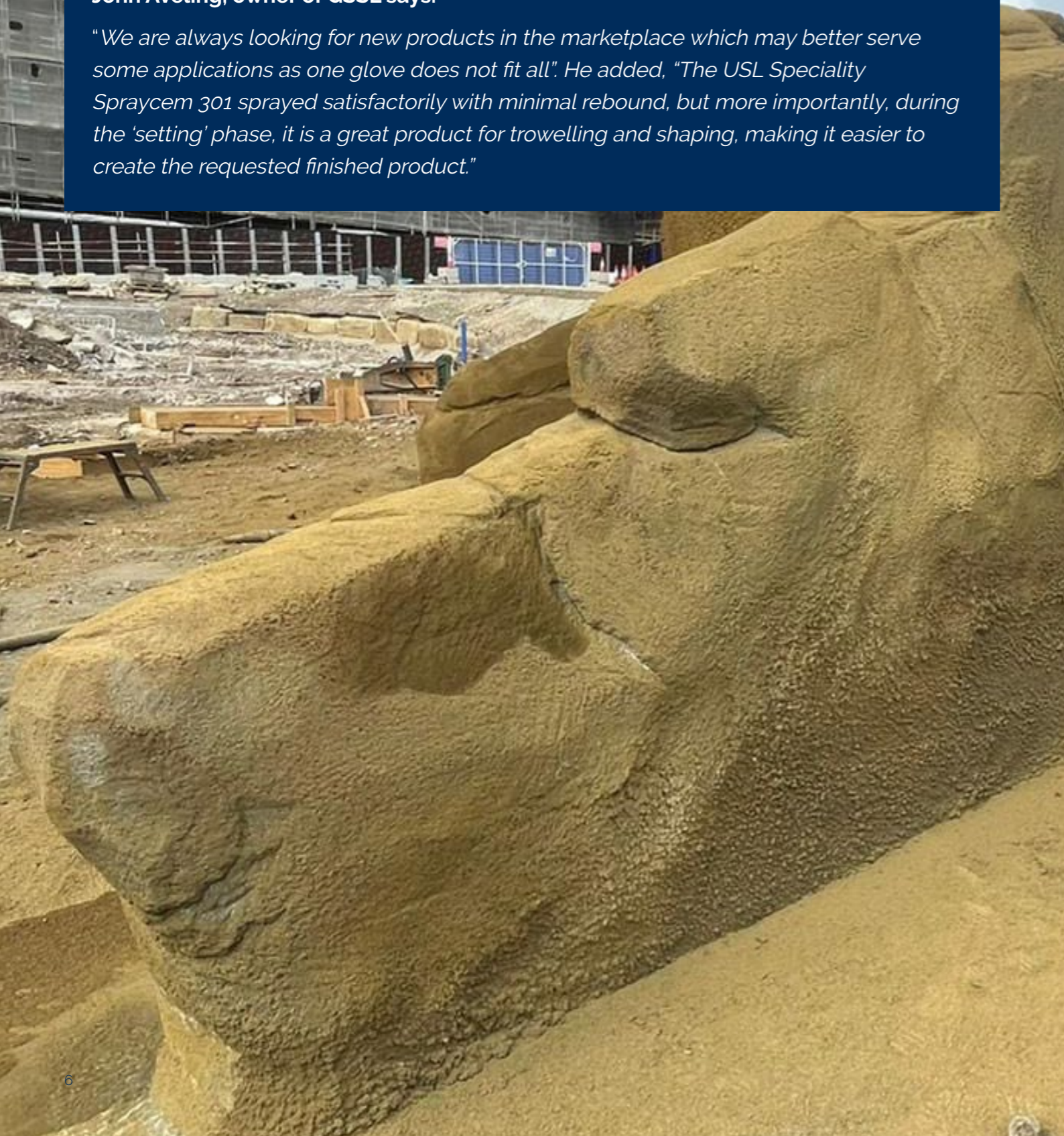


WHY USL SPECIALITY PRODUCTS?

The contractor is one of the largest and most innovative Concrete spraying contractors in the UK and is regularly tasked with 'off the wall' and unusual applications.

John Aveling, owner of GSSL says:

"We are always looking for new products in the marketplace which may better serve some applications as one glove does not fit all". He added, "The USL Speciality Spraycem 301 sprayed satisfactorily with minimal rebound, but more importantly, during the 'setting' phase, it is a great product for trowelling and shaping, making it easier to create the requested finished product."



PROJECT SUMMARY

The USL Speciality Products team provided a highly successful solution fully endorsed by our customer.

SPECIALITY PRODUCTS

 +44(0)191 416 8360

 info@uslsp.com

 www.uslsp.com

POWERED BY OUR BRANDS

 **NUFINS**

 **VISUL SYSTEMS**

PITCHMASTIC PmB

 **Vandex**

 **PDS**

 **Matacryl**

PROTECT PRESERVE ENHANCE